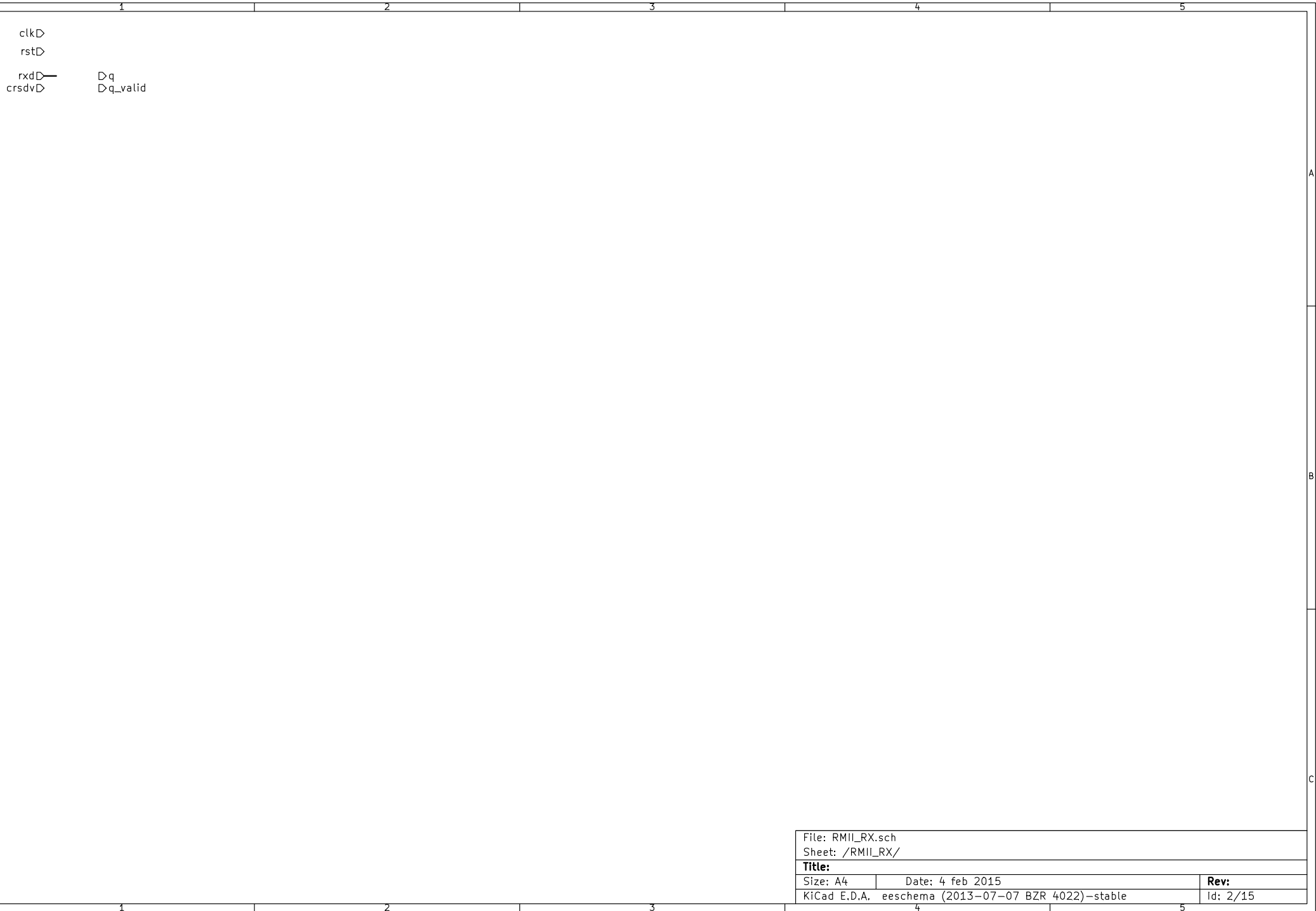
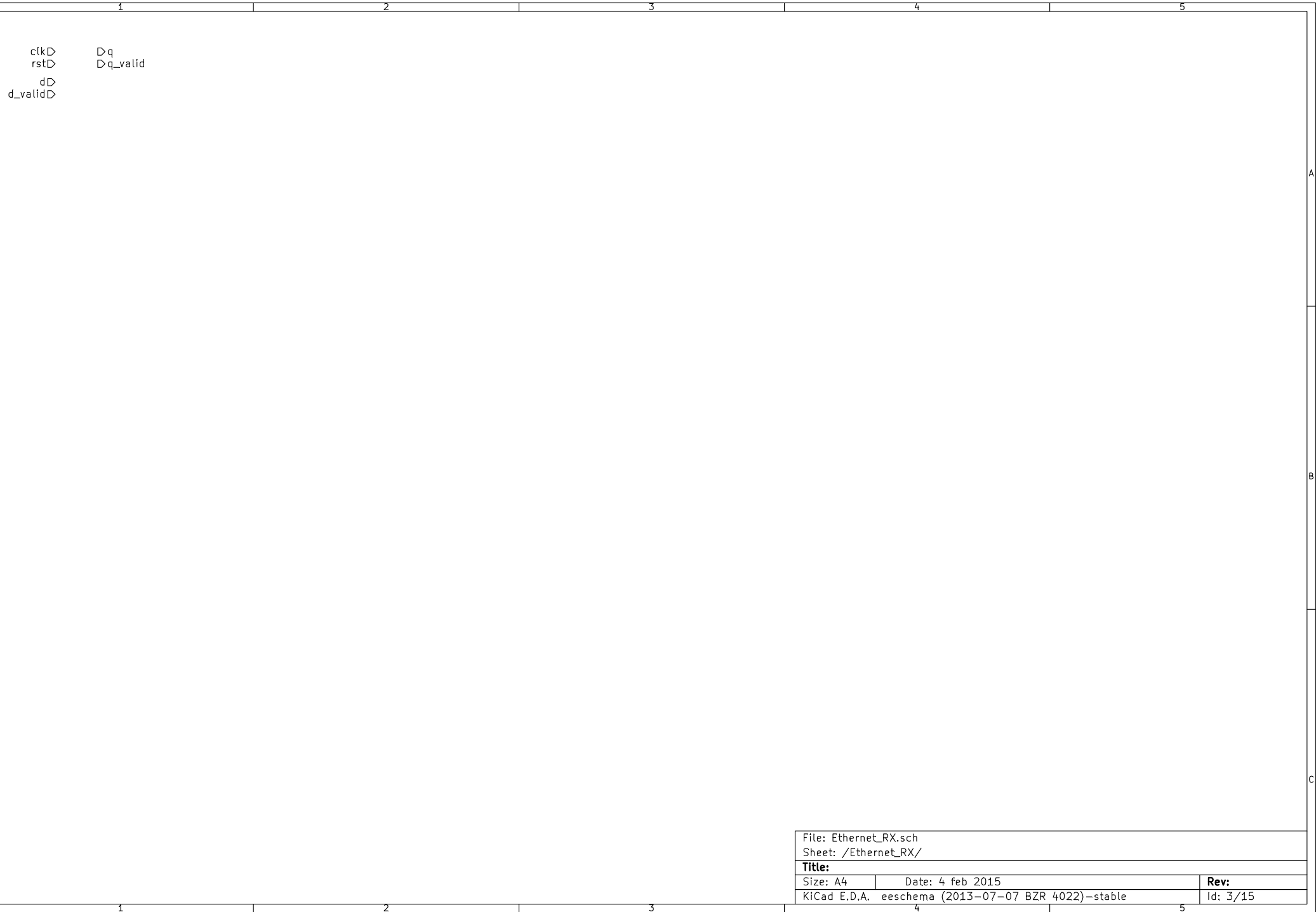


File: DVB-S-Top.sch		
Sheet: /		
Title:		
Size: A4	Date: 4 feb 2015	Rev:
KiCad E.D.A. eeschema (2013-07-07 BZR 4022)-stable		Id: 1/15





clk▷
rst▷
d▷
d_valid▷

▷q
▷q_valid

File: Ethernet_RX.sch		
Sheet: /Ethernet_RX/		
Title:		
Size: A4	Date: 4 feb 2015	Rev:
KiCad E.D.A.	eeschema (2013-07-07 BZR 4022)-stable	Id: 3/15

clk▷
rst▷

d▷ ▷q
 ▷empty
 ▷full
we▷ ▷aL_full
re▷ ▷aL_empty

File: FIFO.sch		
Sheet: /FIFO/		
Title:		
Size: A4	Date: 4 feb 2015	Rev:
KiCad E.D.A.	eeschema (2013-07-07 BZR 4022)-stable	Id: 4/15

clkD
rstD
dD Drmii_txd
d_validD Drmii_txen

A

A

B

B

C

C

File: RMII_TX.sch		
Sheet: /RMII TX/		
Title:		
Size: A4	Date: 4 feb 2015	Rev:
KiCad E.D.A.	eeschema (2013-07-07 BZR 4022)-stable	Id: 5/15

clk▷
rst▷
clk_en▷
sync▷
d▷ ▷q

A

A

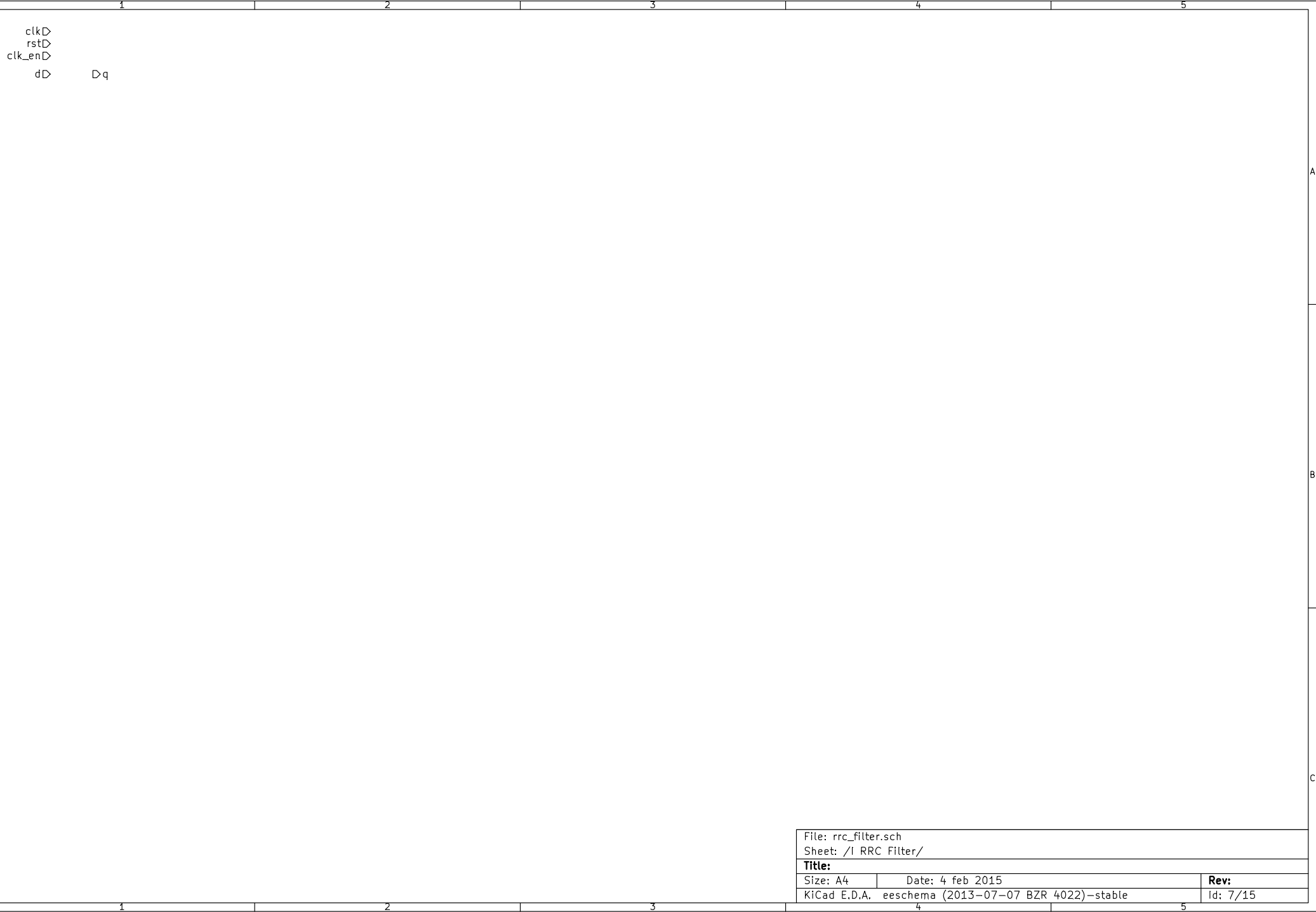
B

B

C

C

File: interleaver.sch		
Sheet: /Interleaver/		
Title:		
Size: A4	Date: 4 feb 2015	Rev:
KiCad E.D.A.	eeschema (2013-07-07 BZR 4022)-stable	Id: 6/15



clk▷
rst▷
d▷

Dread

Dq Daten aus FIFO, 1 Takt Delay
Dscr_valid 188x Puls aller 8 bit, 6x Pause
Drs_clken Puls aller 8 bit
Dint_clken Puls aller 8 bit

Dframesync_scr Puls @ SOF
Dframesync_rs Puls @ SOF, 1 Takt Delay
Dframesync_int Puls @ SOF, 2 Takte Delay

File: controller.sch		
Sheet: /Controller/		
Title:		
Size: A4	Date: 4 feb 2015	Rev:
KiCad E.D.A.	eeschema (2013-07-07 BZR 4022)-stable	Id: 8/15

clk▷
rst▷
clk_en▷
sync▷ ▷q
d▷

A

A

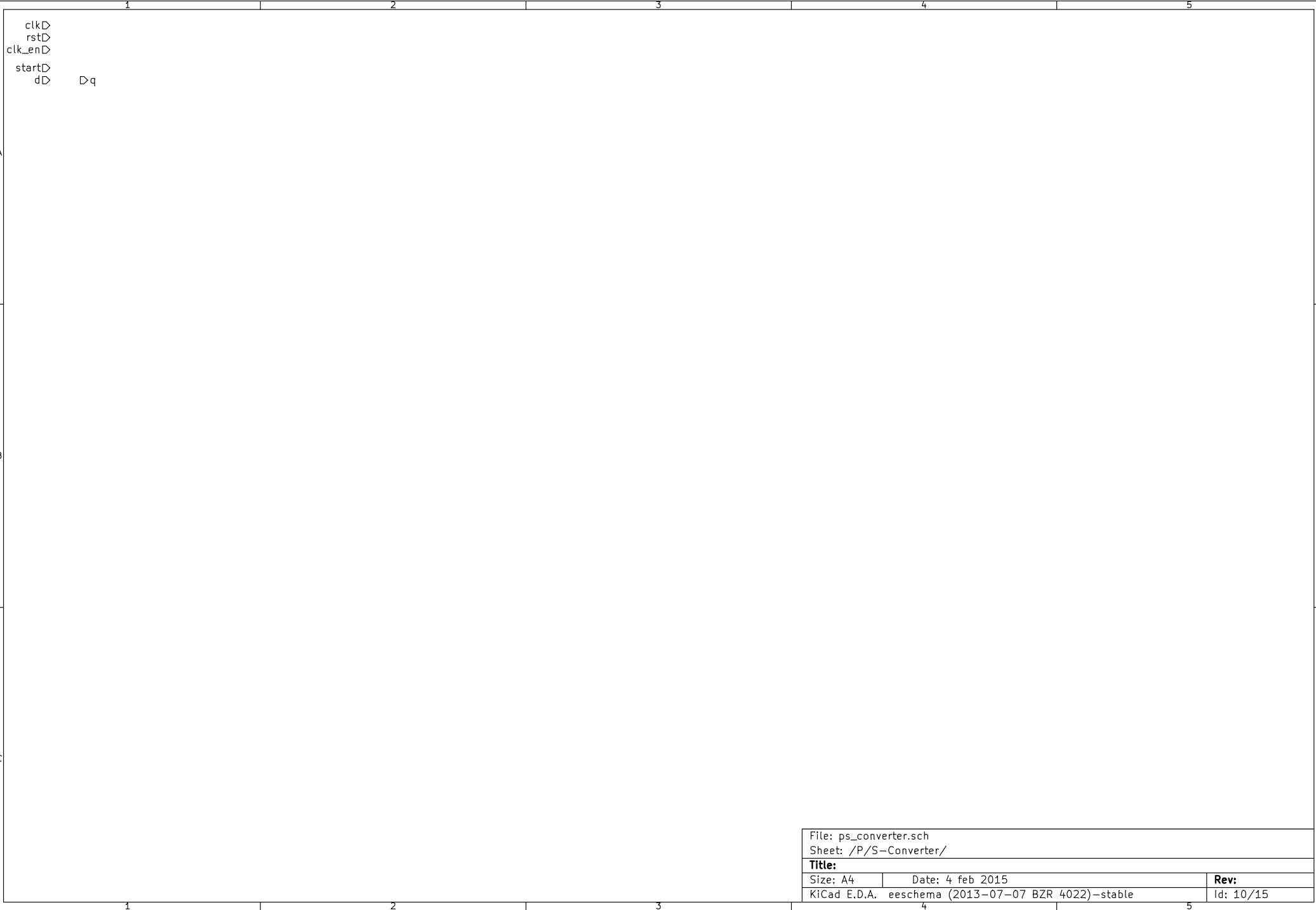
B

B

C

C

File: rs_encoder.sch		
Sheet: /RS Encoder/		
Title:		
Size: A4	Date: 4 feb 2015	Rev:
KiCad E.D.A.	eeschema (2013-07-07 BZR 4022)-stable	Id: 9/15



clk▷
rst▷
clk_en▷ x▷
d▷ y▷

A

A

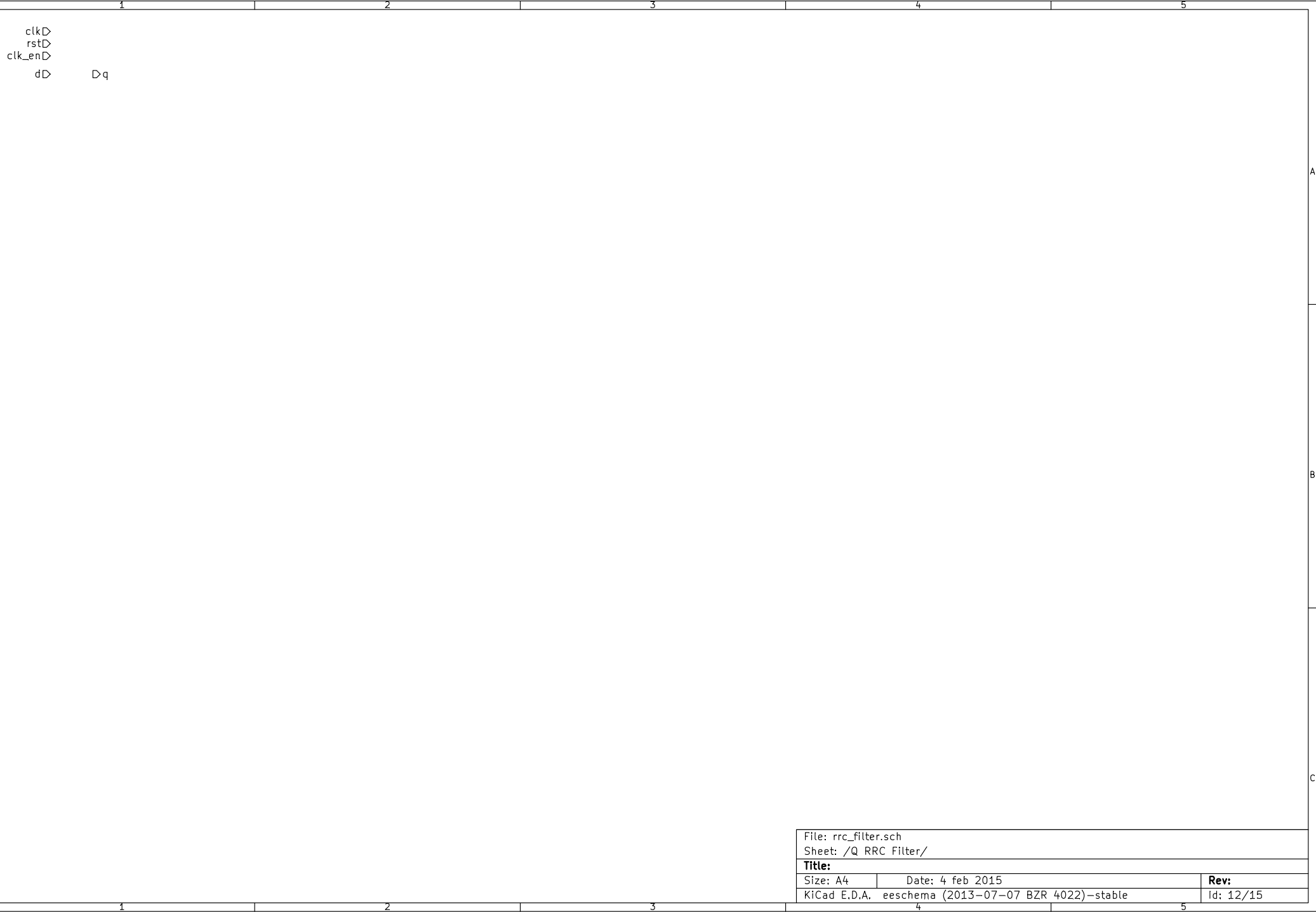
B

B

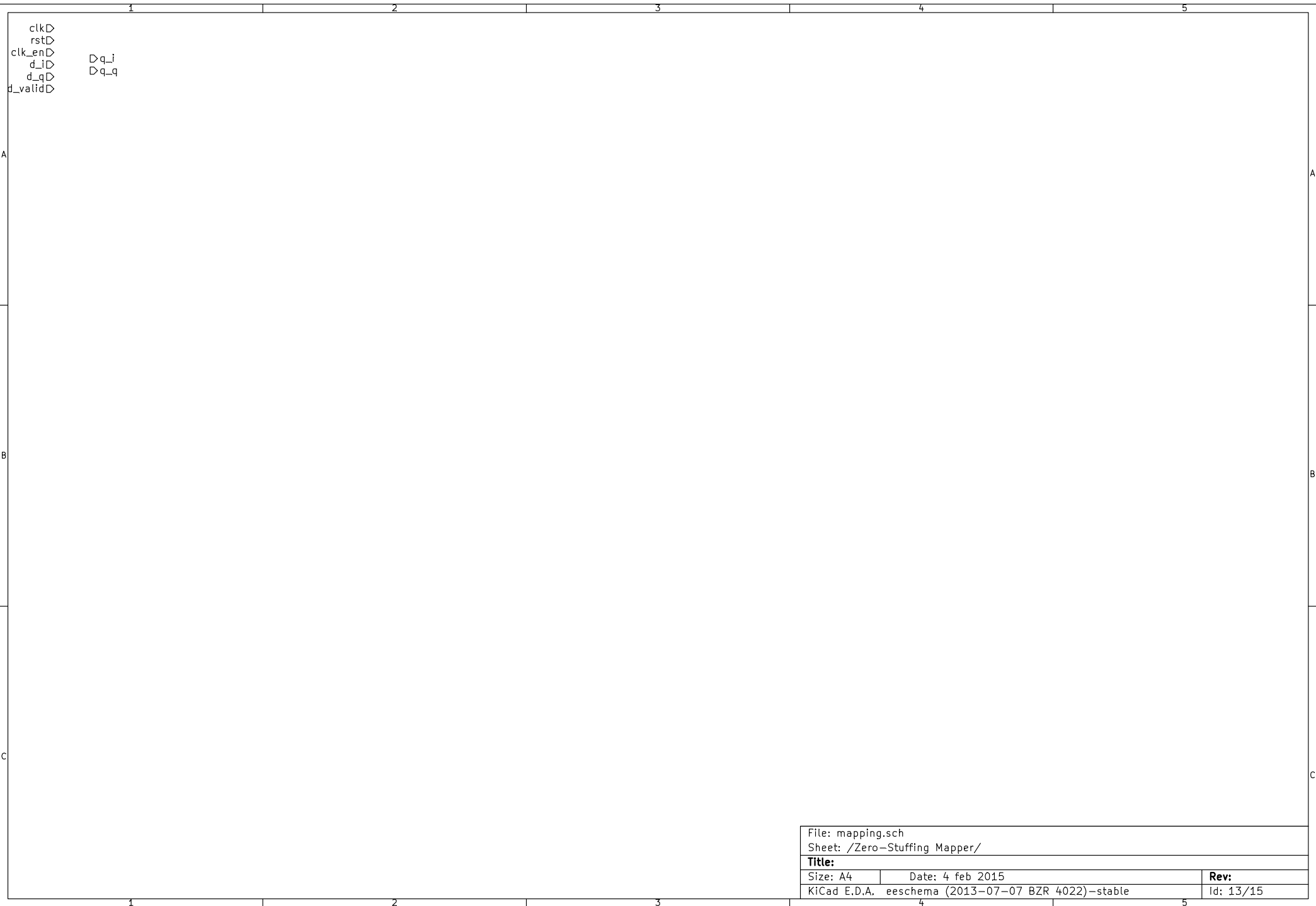
C

C

File: conv_coder.sch		
Sheet: /Convolutional Coder/		
Title:		
Size: A4	Date: 4 feb 2015	Rev:
KiCad E.D.A.	eeschema (2013-07-07 BZR 4022)-stable	Id: 11/15



File: rrc_filter.sch		
Sheet: /Q RRC Filter/		
Title:		
Size: A4	Date: 4 feb 2015	Rev:
KiCad E.D.A.	eeschema (2013-07-07 BZR 4022)-stable	Id: 12/15



clk▷
rst▷
clk_en▷
d_i▷ ▷q_i
d_q▷ ▷q_q
d_valid▷

File: mapping.sch		
Sheet: /Zero-Stuffing Mapper/		
Title:		
Size: A4	Date: 4 feb 2015	Rev:
KiCad E.D.A.	eeschema (2013-07-07 BZR 4022)-stable	Id: 13/15

clk▷
rst▷
clk_en▷
sync▷
d▷

Dq

A

B

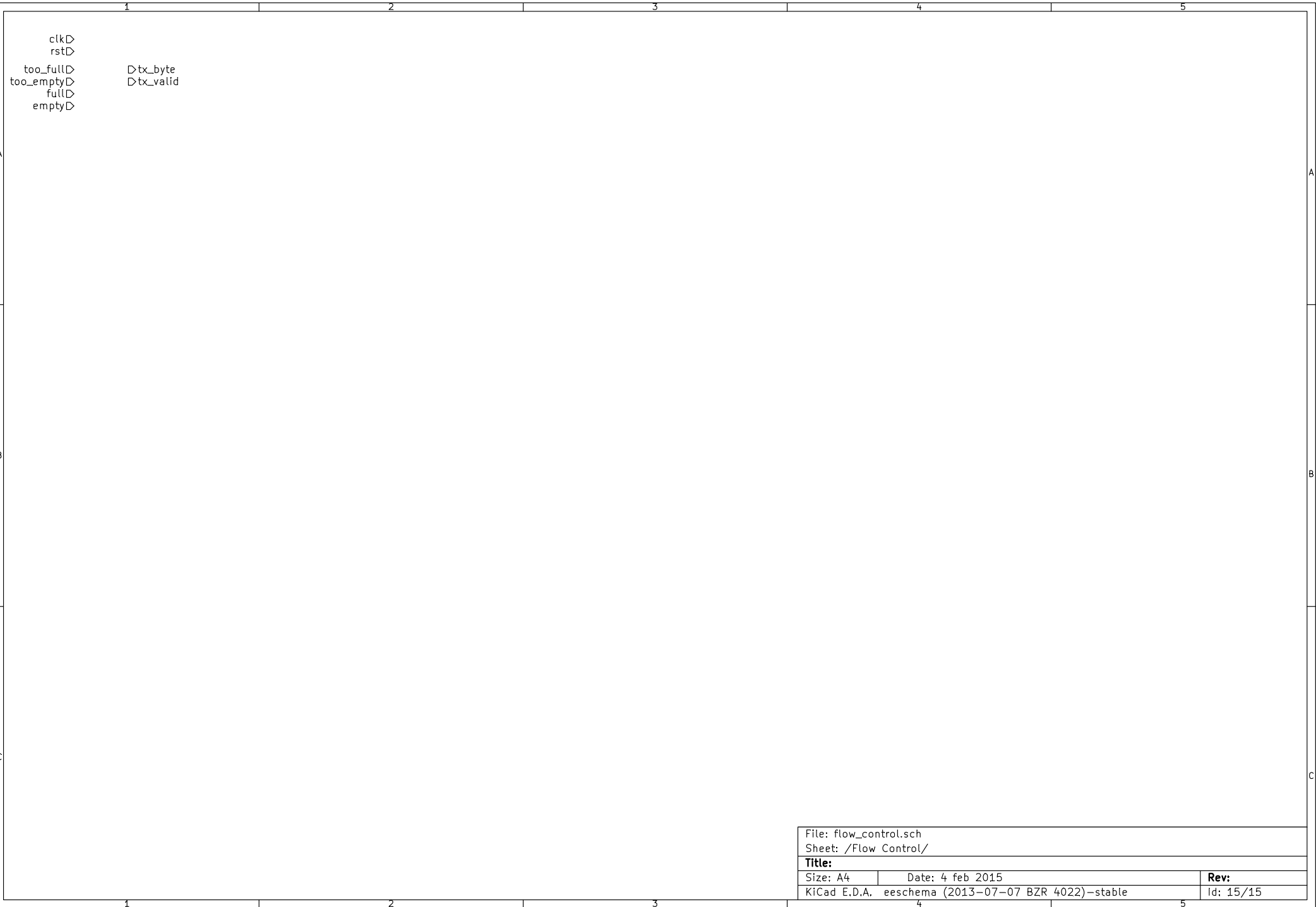
C

A

B

C

File: scrambler.sch		
Sheet: /Scrambler/MUX Adapt/		
Title:		
Size: A4	Date: 4 feb 2015	Rev:
KiCad E.D.A.	eeschema (2013-07-07 BZR 4022)-stable	Id: 14/15



clk▷
rst▷
too_full▷ ▷tx_byte
too_empty▷ ▷tx_valid
full▷
empty▷

File: flow_control.sch		
Sheet: /Flow Control/		
Title:		
Size: A4	Date: 4 feb 2015	Rev:
KiCad E.D.A.	eeschema (2013-07-07 BZR 4022)-stable	Id: 15/15